

# WELLINGTON DAM LEGACY FOREST



CALL NOW - LIMITED CAPACITY

08 6333 0349

Follow Us



"Give me a home among the gum trees"

Be a Part of Creating Something Great

After watching Warren if you are still unsure I would ring the Living Legacy team

I couldn't recommend Living Legacy and the team highly enough

MEGAN MITCHEL, AUSTRALIND



Head Office

Address: 4/349 Collins St, Melbourne VIC 3000

Email: [Contact@LivingLegacyForest.com](mailto:Contact@LivingLegacyForest.com)

Web: <https://LivingLegacyForest.com>





# The Science of Ashes

Honor life by giving them the best treatment.

The Living Legacy Forest treatment converts ashes into life-giving nutrients that help trees grow. This way a person's life can be perpetuated through trees.

## THE MYTH?

Human ashes are the same as wood ashes and good for nature.

## THE TRUTH?

Untreated cremated ashes have the same pH level as bleach and are proven to cause lasting harm to soil and tree health.

We have perfected the treatment of ash to continue the circle of life with life-giving nutrients that help trees grow.

When you plant a tree with us you're a part of a growing community that is creating new forests around the world.

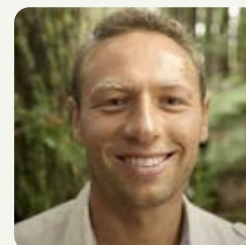
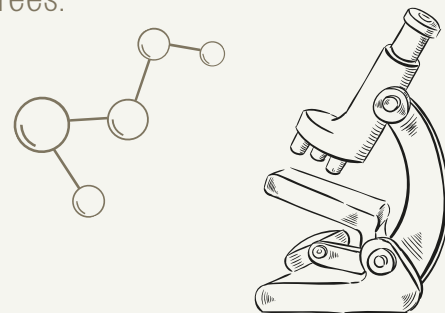
Our technology was developed over 2 years of independent lab development and further tested over another year by Australia's largest cemetery operator.

Living Legacy Forest is trusted as Australia's leading provider for cremated ash treatment and GECA certified so you can rest assured your loved one's ashes will be treated with care and expertise.



"It was such a nice feeling for us to be able to be part of preparing our own resting place. With the freshness and freedom of such a beautiful location. Thank you for creating a concept that allows a more sustainable way of remembering our loved ones and benefiting the planet with reforestation." **Mel Constable**

"Putting our son's ashes into a tree allowed us to stay connected to his memory through this living organism ... we'll see it growing stronger and flourishing, and this will give myself and the whole family a great deal of comfort. He loved the outdoors, loved nature..." **Sarah Hardman**



## The Founder's Story Warren Roberts



15 years ago I lost my best friend after she passed away straight after an operation. For several years I struggled with grief and shut off emotionally; to avoid feeling the hurt, loss, and grief over losing her.

It wasn't until I spent time in nature that it felt good to feel again, and it didn't just feel good, it felt beautiful. So I spent more time in nature, and the more time I spent the more beautiful everything got.

I suddenly thought to myself, wow, imagine if people's ashes were inside trees, and instead of counting what we had lost, instead of connecting to the pain and grief, we could connect to the beauty that their life created.

We could connect to the privilege of being alive and being a part of life, and the beauty of having people that we still love with us.

In the past, people would be buried and collectively we would create cemeteries; now people are becoming trees and are creating beautiful new forests.

Communities around Australia are now coming together to create new forests from cremation ashes that connect loved ones to the beauty that life creates.

These forests are tranquil resting places where people can connect to the beauty that a loved one's life created in the form of a living tree.

That's at the heart of the Living Legacy Forest, that's why I created and that's why I want you to be a part of creating beautiful memorial forests.







# The HEALING POWER OF NATURE

CONNECT with nature and allow it to be part of your healing process.

After infusing your loved one's ashes, their energy and life essence will be in the forest, within the soil, living on and helping to perpetuate new life. Breathe in the air created from their tree and heal from watching it grow into a thriving part of the forest.

The Wellington Dam Memorial Forest is open 365 days a year. Visit as often as you wish. Spend time by your loved one's tree and immerse yourself in the rich flora and fauna of the iconic area.

Take pride in knowing that your loved one's Living Legacy Tree is reforesting local land, while also supporting the repopulation of critically endangered species in Western Australia i.e. the mainland quokka and black cockatoo.



"He loved the bush, we just knew it was the right resting place for him"

**Susan Adams, Meadow Springs**

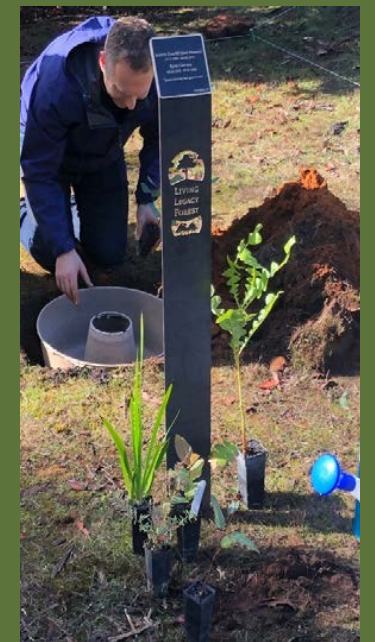


"For us, it's letting us put him at peace and letting him be free" -

**Jan Harris & Family, Bunbury**



# PLANTING DAY, 9 JUNE 2019



"We had mum's ashes set on the shelf for 9 years. None of us could agree on what to do with them. She loved birds and now she'll be a home for them, if she was still here today she'd love this!"

**Richard James, JOONDALUP**



# Three steps to create your Living Legacy

## Step 1: CHOOSE YOUR Living Legacy Tree

Choose from four species of local native trees

- Jarrah (Eucalyptus marginata )
- Marri (Corymbia calphylla )
- Blackbutt/Yarri (Eucalyptus patens )
- Bullich

Interest free payment plans available with 20% deposit for pre planners

Jarrah (Eucalyptus marginata )



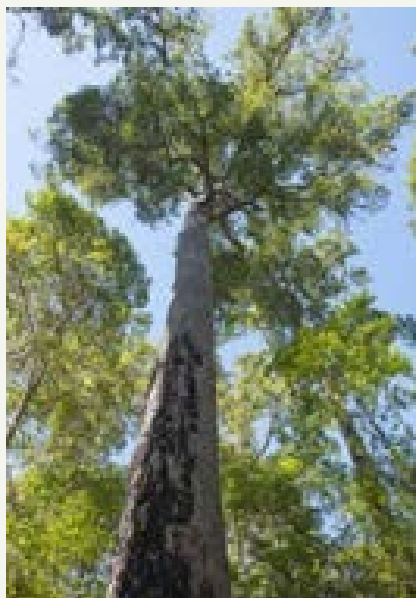
Blackbutt (Eucalyptus patens )



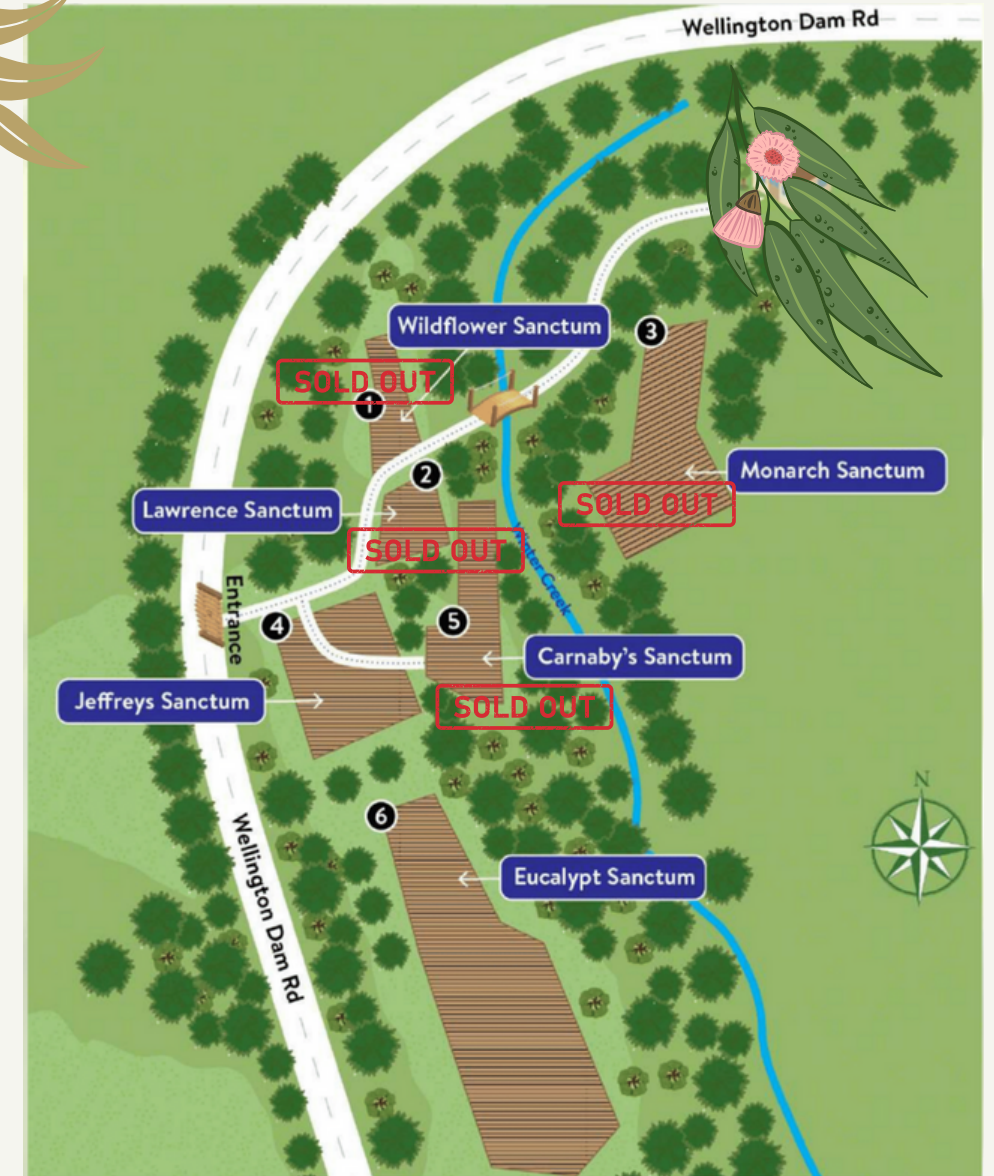
Example of plaque



Marri (Corymbia calphylla )



## Step 2: CHOOSE YOUR LOCATION



## Step 3: CHOOSE YOUR PLANTING DAY.

On the planting day ceremony your Legacy Planner will;

- Prepare and help plant your chosen tree (2-4 foot tall )
- Transform and detoxify the ashes so they can sustain the life of a tree.
- Install your customised plaque.
- Hold your personalised tree planting ceremony



Whats included with my tree?

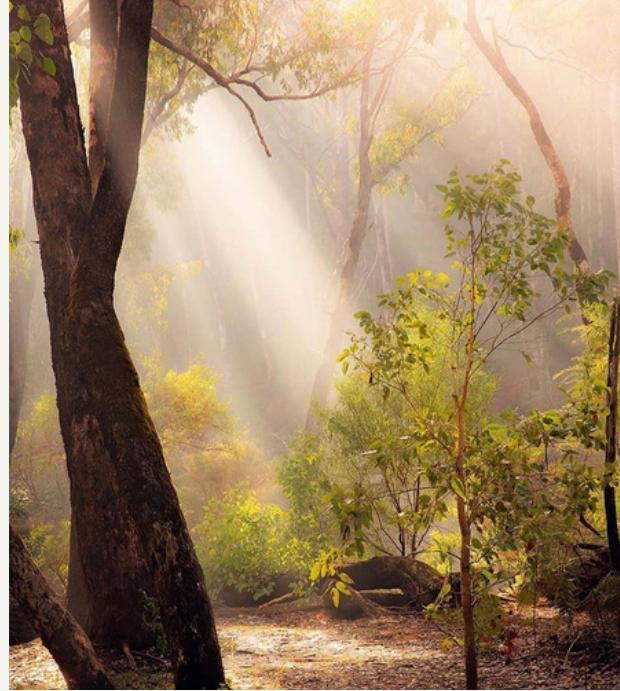
- Personalised Plaque
- Perpetual Care
- Ceremony and service



## The Sustainable Option Creating forests instead of graveyards

You can rest in peace knowing your forest is protected not just by the conservation covenant registered on title but also by the governance.

Revenue from Tree sales is managed by Legacy Conservation Forest Ltd a (Registered Charity) to care for the site in perpetuity.



## Graves decay, Nature flourishes

Your Legacy tree will live up to 400 years as part of the forest. These trees will create thousands of seeds and seedlings that regenerate in the forest eco system, living on beyond their original life span and truly perpetuating the individual's life.



## Affordability with no future fees

Avoid cemetery leases and any chance of being moved on from your final resting place. Truly rest in peace and for eternity in nature. Your 'forever plot' starts at only \$3,960.

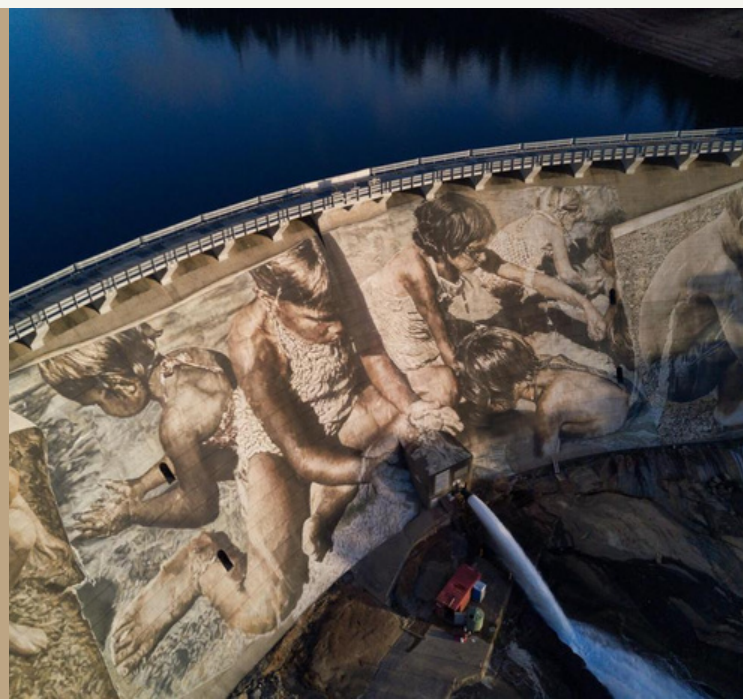
(Interest free payment plans available with 20% deposit for pre planners.)



# A LIVING LEGACY FOR EVERYONE

## Rest at the gateway to the South West

The Wellington Dam Memorial Forest is an easy drive from Perth and perfectly located en route to WA's stunning South West region.



## Re-build habitats

Rest among the rich fauna of Wellington Forest. Planting a Living Legacy Tree rebuilds the habitat and helps to protect the beautiful endangered species endemic to the region, such as the quokka and Carnaby's black cockatoo.





**Where is the Wellington Dam Legacy Forrest?**

Wellington Dam Legacy Forrest is located next to Wellington national Forrest Park, which is comfortable 2 hr drive from Perth CBD(En Route to Margaret River ) and 30 mints from Bunbury

To find the exact location in Google Maps type: 1 Wellington Dam Rd, Worsley WA 6225

**When is the Wellington Dam Legacy Forrest OPEN?**

It is open 365 days a year

**Are there toilets and facilities at the Site?**

There is a simple portable toilet facility on the premises.

**Is our memorial Safeguarded?**

Yes, we have worked alongside the Western Australian State Government to ensure the site is protected by a conservation covenant and will remain a persevered memorial site permanently.

**What happens on the Ceremony Day?**

Your Living Legacy Celebrant will help you design your Ceremony and walk you through the process of what will occur on the day.

**Is there a State Government Involvement?**

Not directly. We do have agreements with four State Governments and our patented Treatment is used by Government agencies all across Australia.

**What Happens if there is a Fire?**

Throughout Wellington Dam Forrest there are fire breaks to prevent the forest fires from spreading. Our local site Management team also works closely with the local Bush Fire Brigade to implement our Fire Management Plans.

It is important to acknowledge that Bush Fires are a natural, essential, and complex part of the Australian environment and have been for millions of years. It is often regenerative and create new plant life.



**What Happens when my tree Dies?**

Our treatment turns cremated ash into a highly nutritious component. In the event of a tree dying prematurely, one application of bio liquid area in the same area where the tree was planted re-activates the soil microbes which converts the ash into nutrients allowing a new tree to be replanted in the same location

**Do we receive documentation?**

Yes, you will receive Certification of your purchased memorial within the Forrest. If you are preplanning you will receive clear instructions on how to involve the legal representation /executor of your will

**I want a Living Legacy Tree when a pass away, how do I do it?**

Secure your memorial in advance with one of our Living Legacy Celebrants. They will guide you in planting your trees now and when the time comes, Your ashes will be treated and added to your Living Legacy Tree as part of your memorial Ceremony.

**Can I share my memorial with my pets?**

Yes, absolutely. Many people adore their pets and want to have a place to remember them. Our ash treatment remains highly effective for animal ashes too.

**Is the Wellington Dam Legacy Forrest Maintained?**

Yes, we have a local Management team maintaining the site all year round. There is also CCTV surveillance installed onsite.

Funds from tree sales are used to conserve the forest in perpetuity and the forest is managed by Legacy Conservation Forest Ltd a Registered Charity.



In the past, people were buried in the cemeteries

We would begin our healing process by laying our loved ones to rest in a grave. It was a final resting place, a location we could visit, remember our loved ones, grives and pay respect

**Today most of us are choosing cremation.**

Uline traditional burial , cremation does not naturally provide us the final resting place to help us grieve. As a result many of us keep loved one's ashes in boxes or urns for much longer than planned . Every person gives differently, but many, holding on to ashes can result in holding on to grief.

For thousands of people Autralia-wide, memorial first stand out as 'Modern day cemeteries' with an ancient beauty.

They provide us with everything traditional burial gave us and more.

We can heal through the power serenity of nature, we can connect with our loved one's memory while watching their tree grow and become part of the forest

Some Living Legacy Trees reach over 30 meters tall !

The living memorial that we can look up to in awe.

Becoming a tree may not be for everyone, but most will agree on the Wellington Dam Legacy Forest is something special .



**In the heart of nature and teeming with wildlife, it is a memorial forest within a forest, an idyllic resting place for ourselves and our loved ones**

**If Only 10% of Australians choose to have a Living Legacy Tree after they passed, that would result in nearly half a Billion trees being planted!**

**Becoming a tree may not be for everyone, But it is for everyone we leave behind.**

